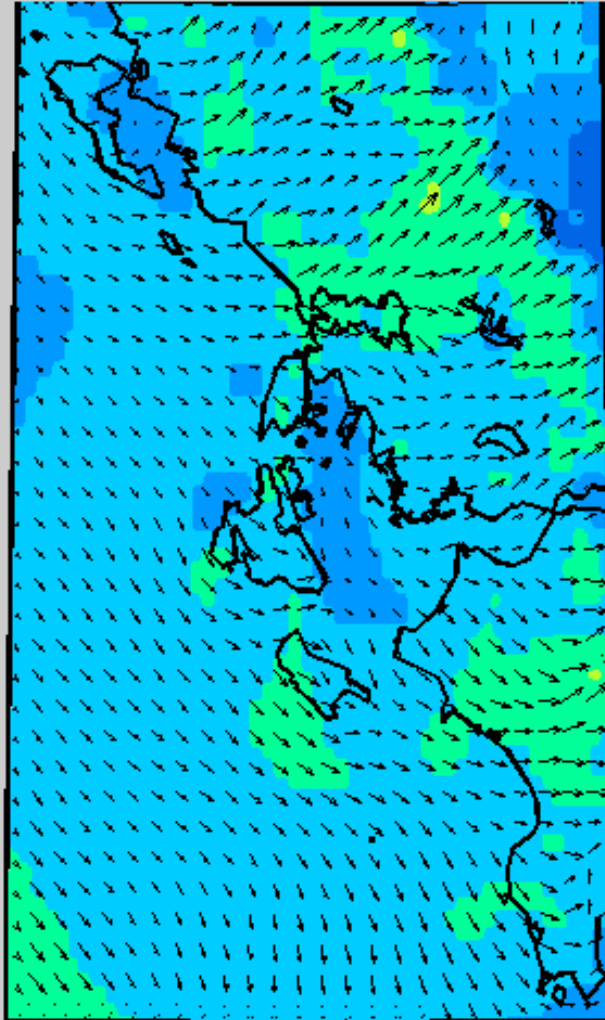


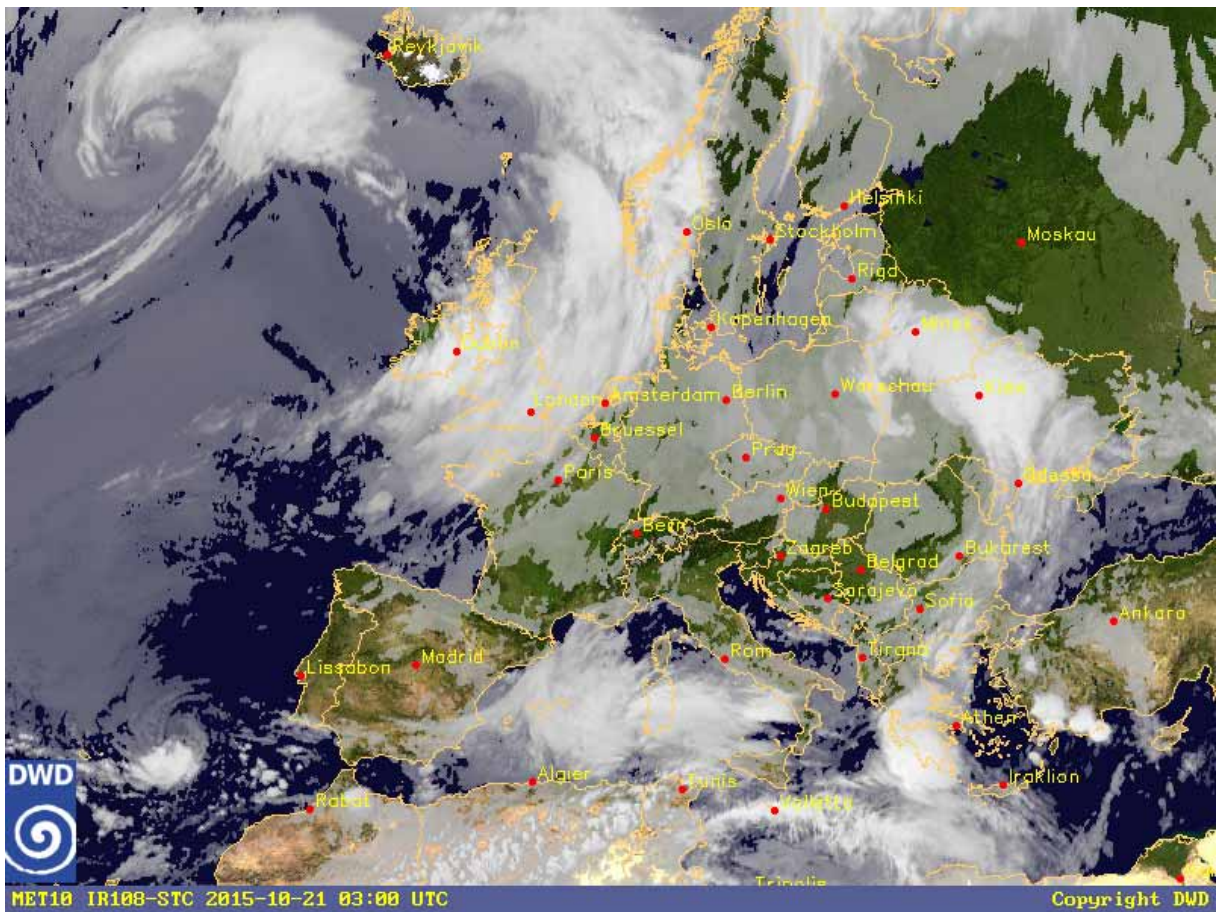
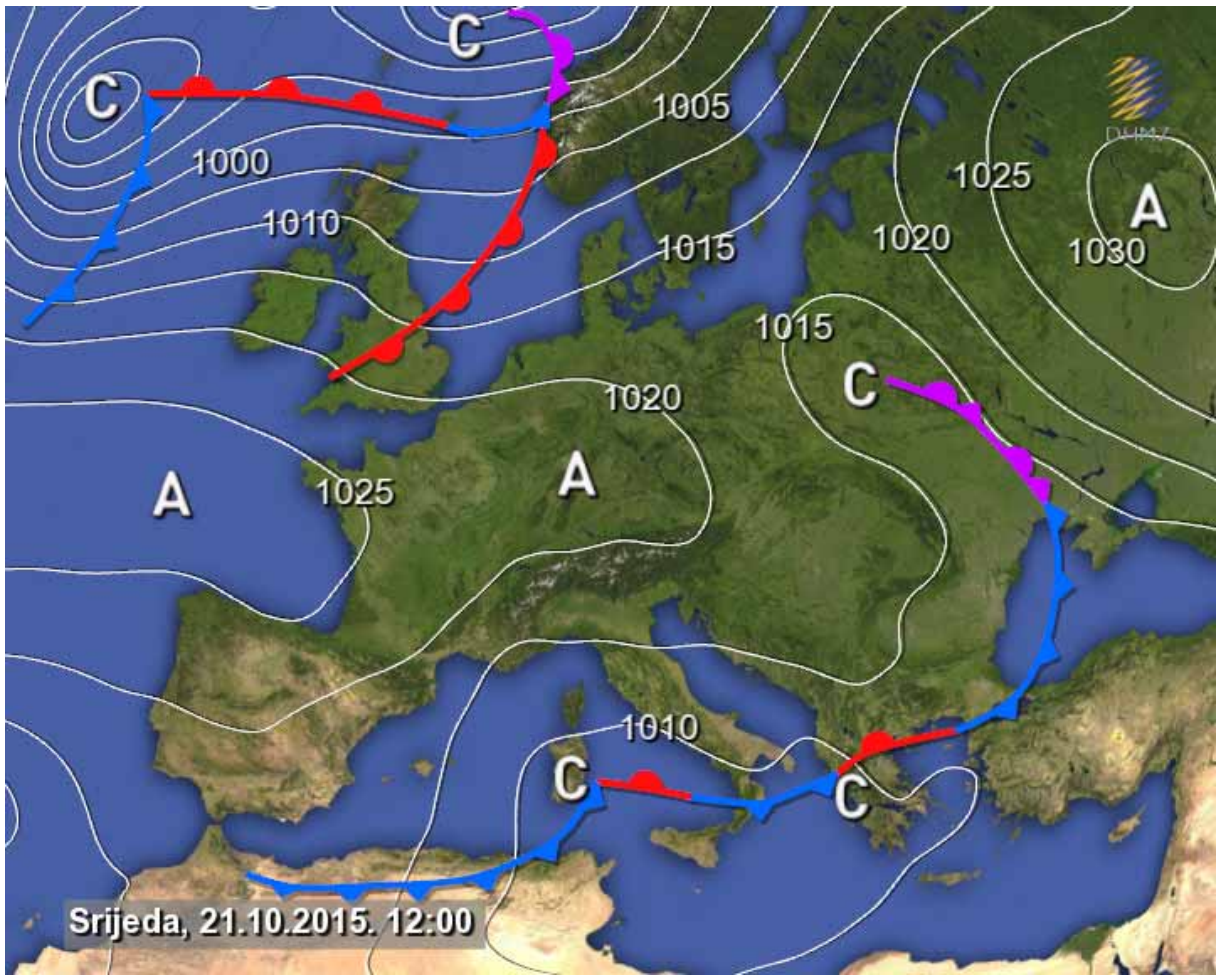


Ionian sea
Surface wind (10m) on Tuesday (20/10/15) 12:00UTC



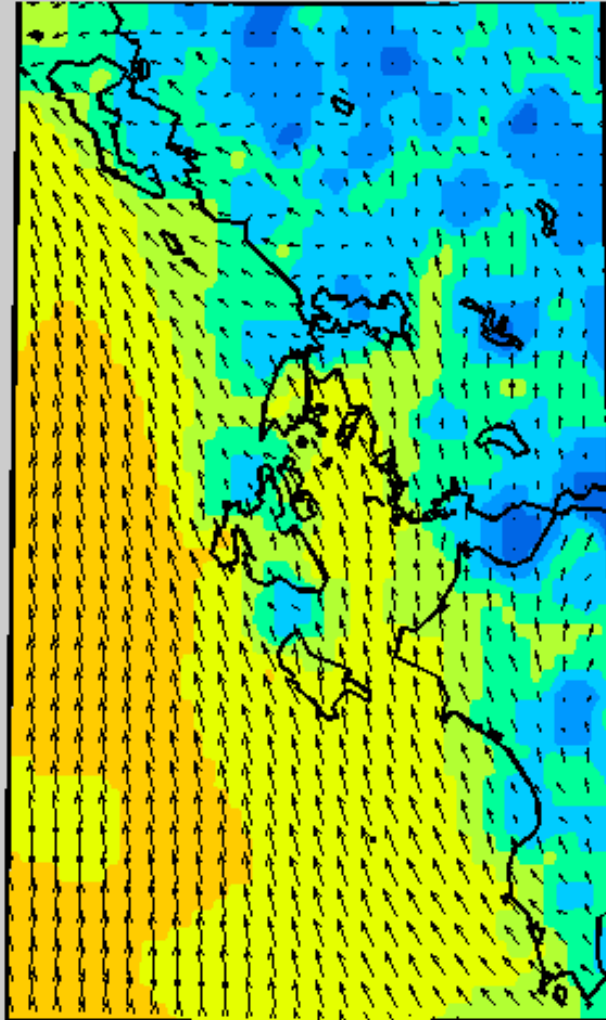
Color denotes the wind speed (b), vectors denote direction



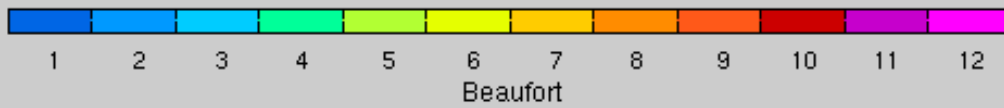


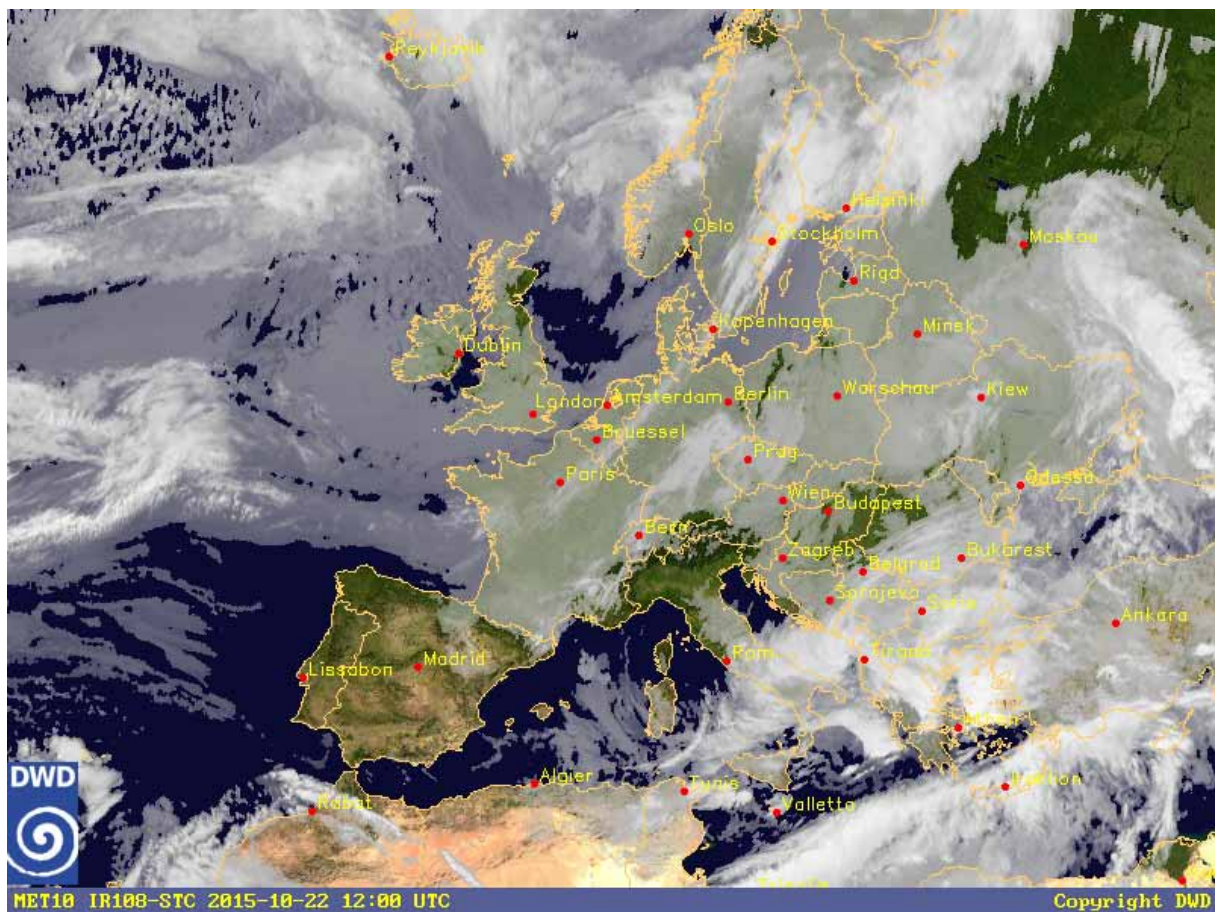
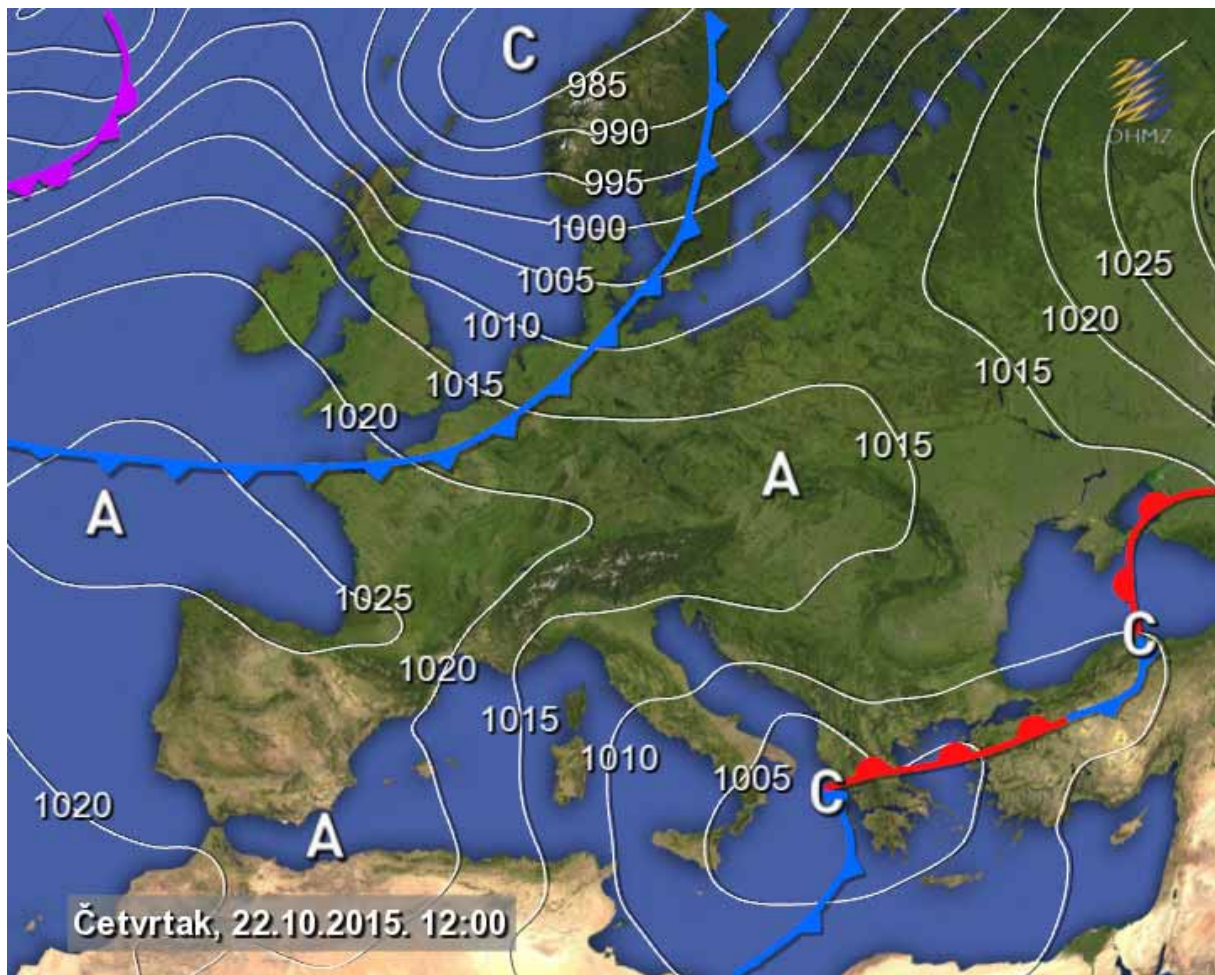


Ionian sea
Surface wind (10m) on Wednesday (21/10/15) 15:00UTC



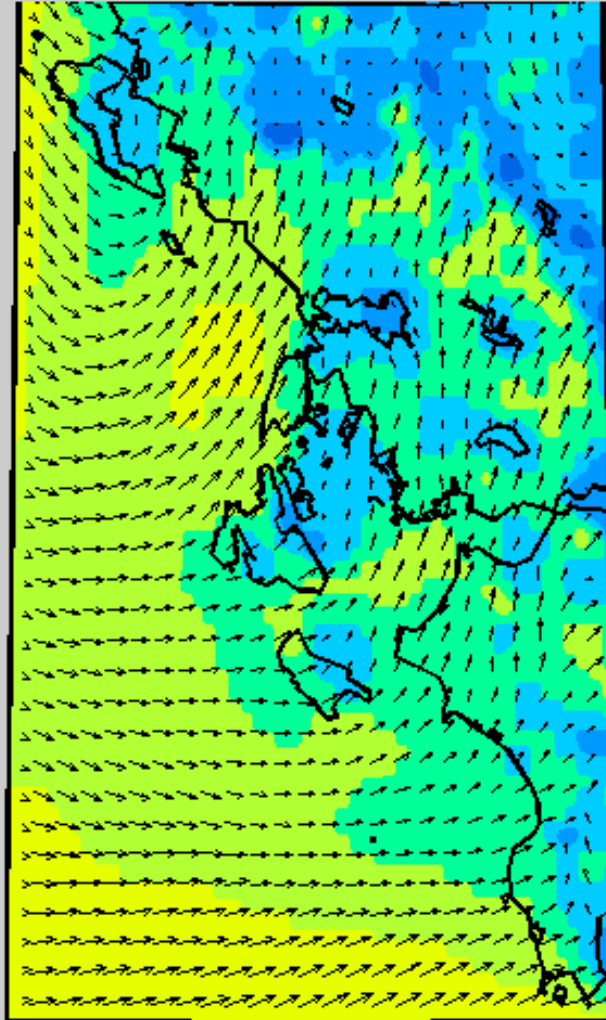
Color denotes the wind speed (b), vectors denote direction





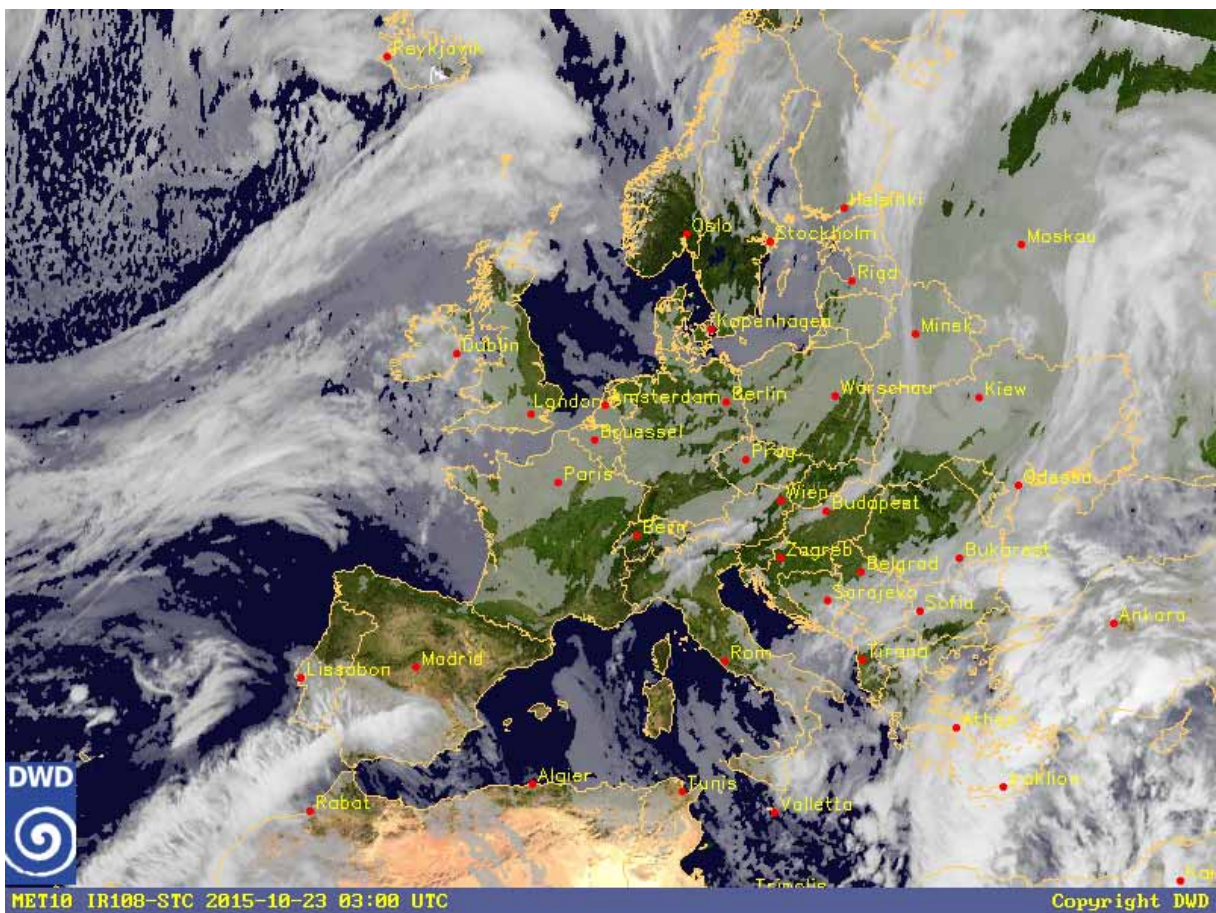
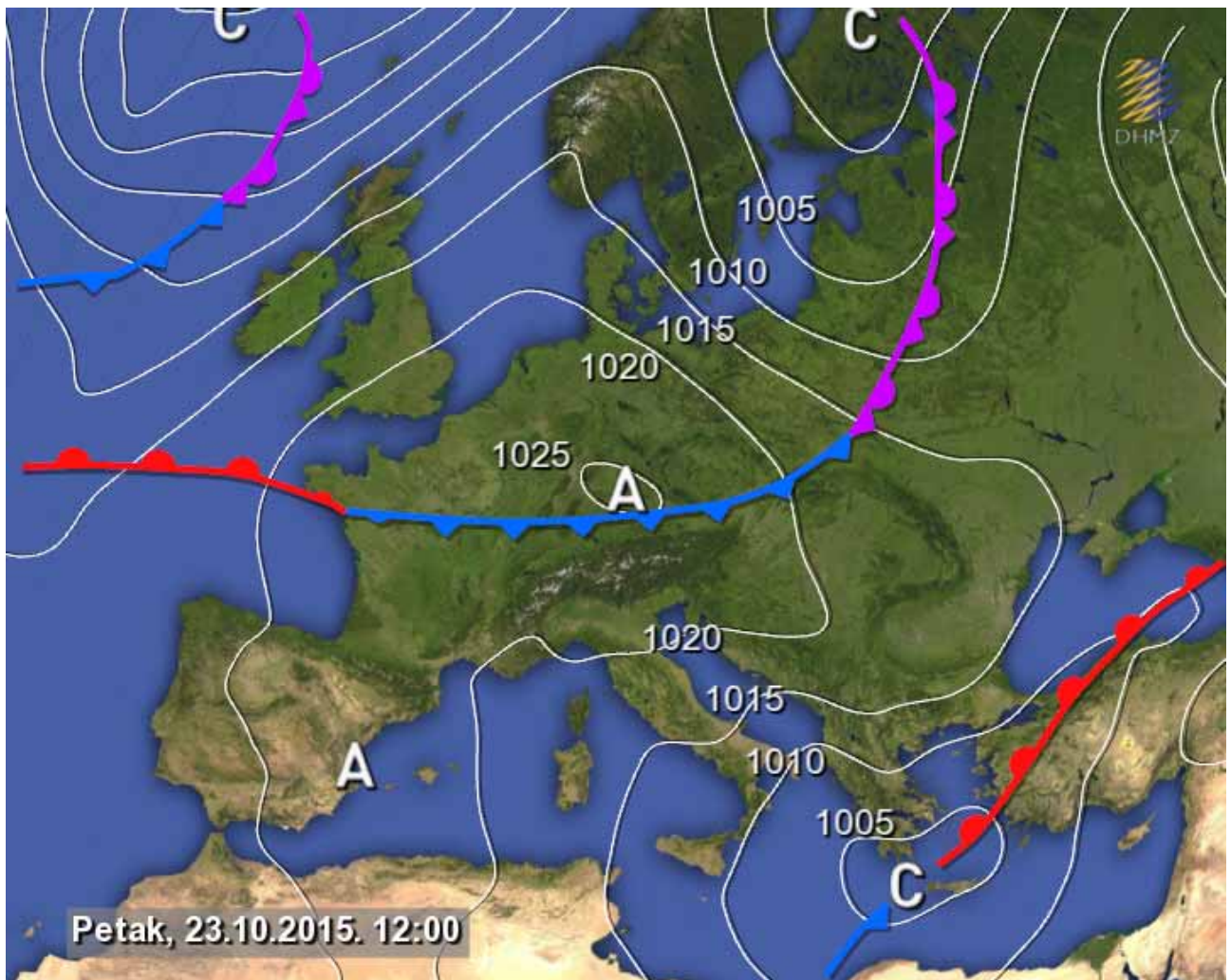


Ionian sea
Surface wind (10m) on Thursday (22/10/15) 18:00UTC



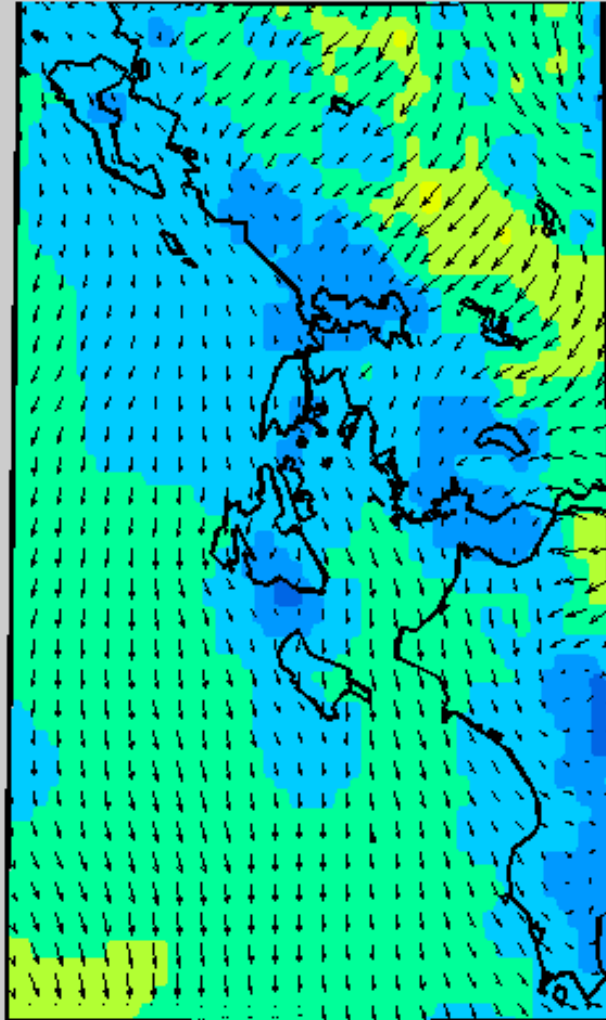
Color denotes the wind speed (b), vectors denote direction





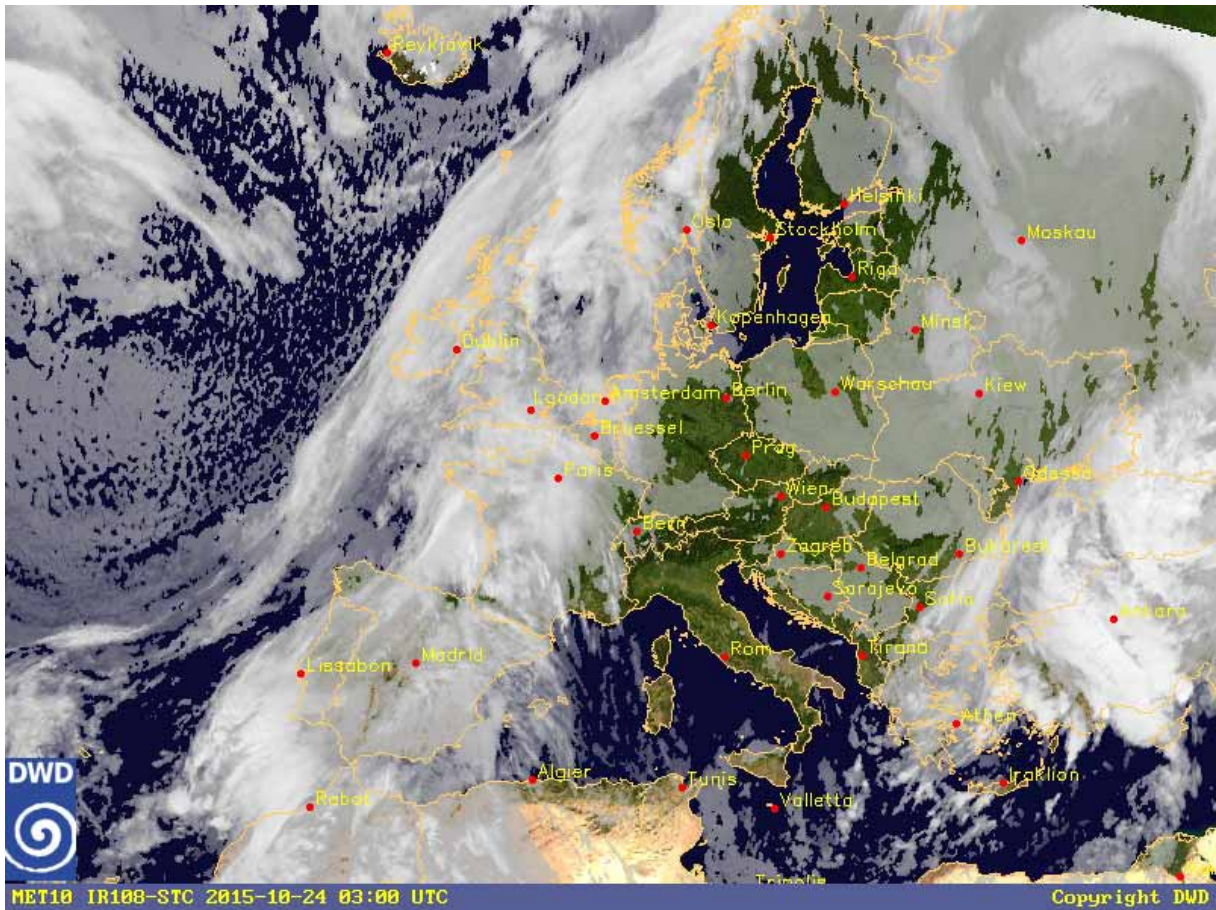
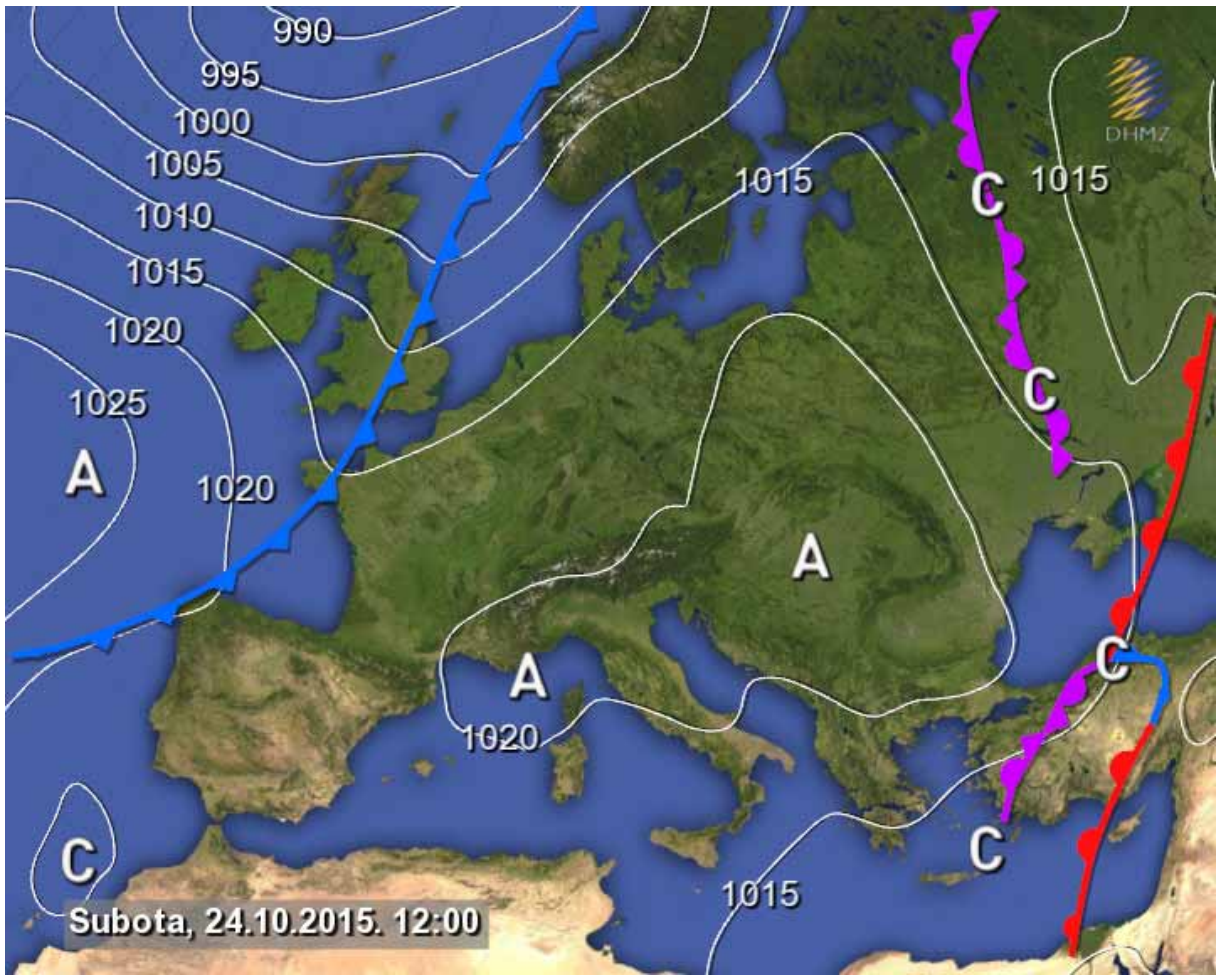


Ionian sea
Surface wind (10m) on Friday (23/10/15) 12:00UTC



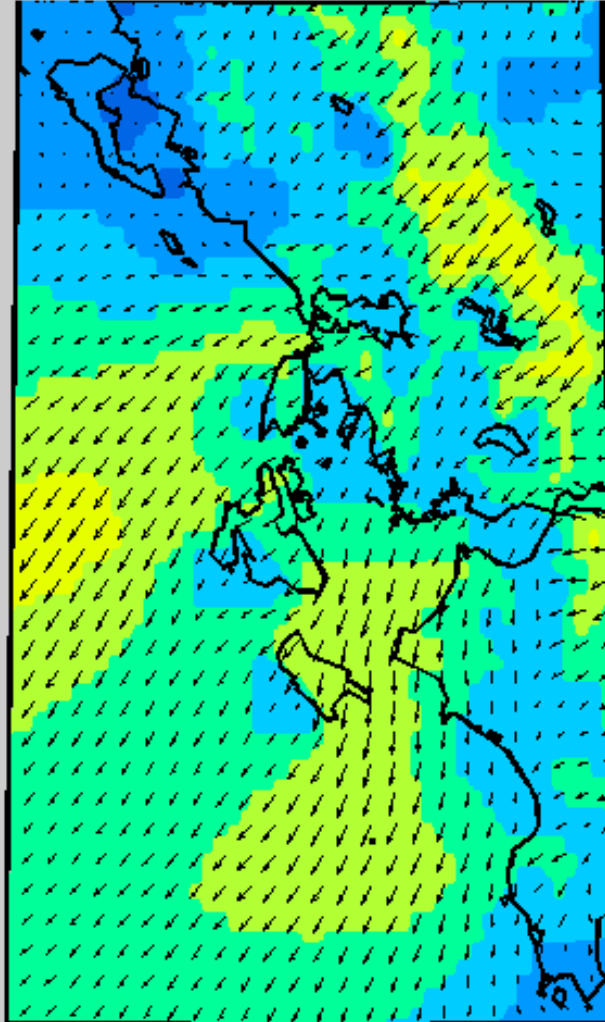
Color denotes the wind speed (b), vectors denote direction





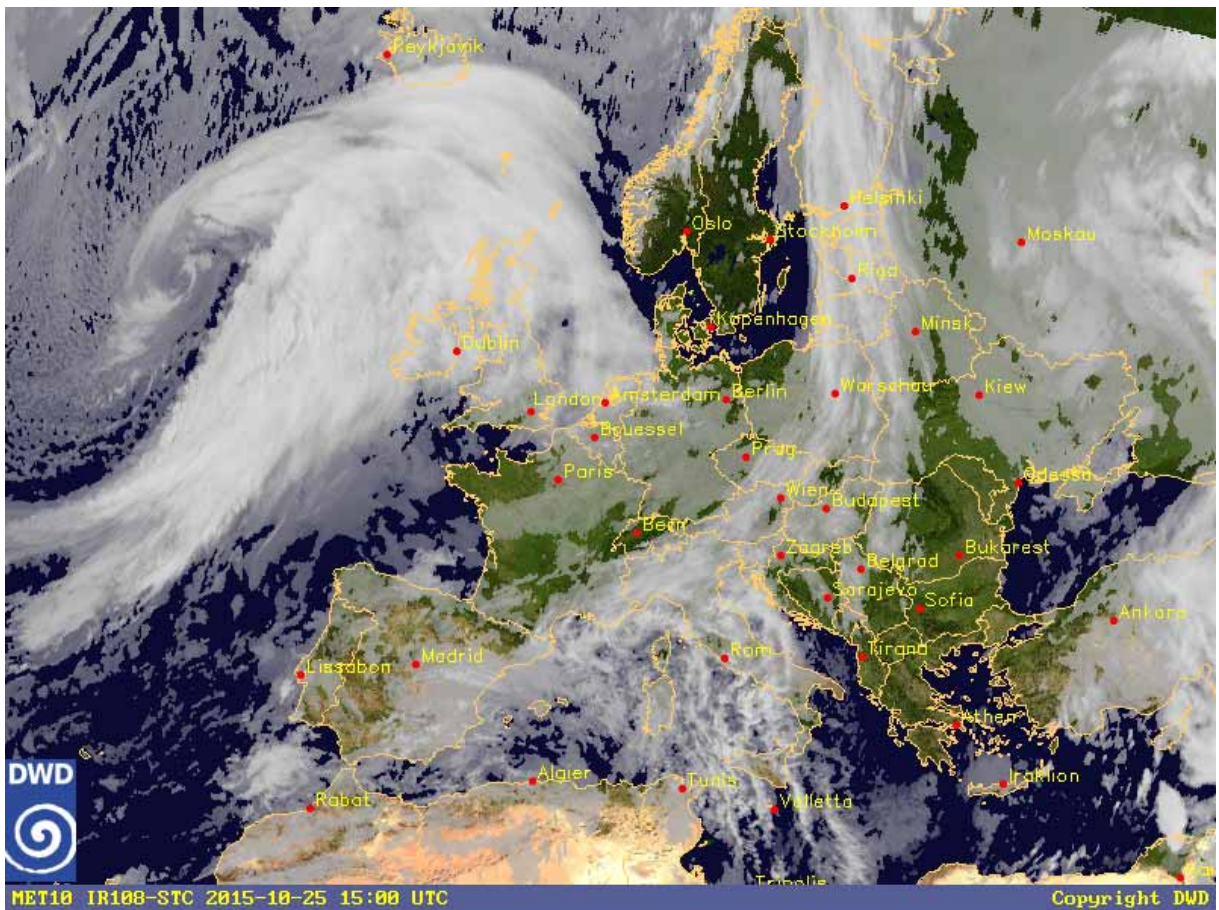
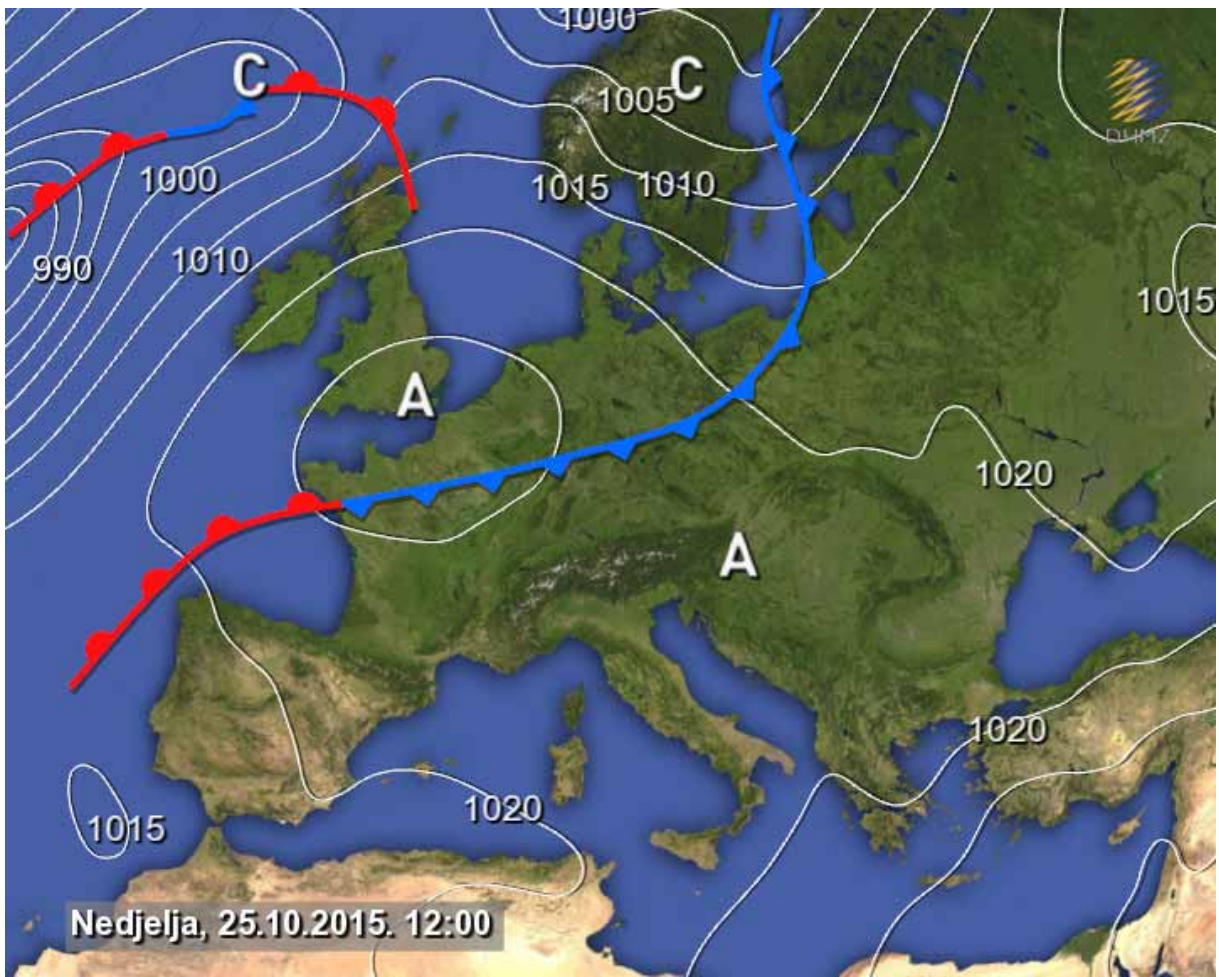


Ionian sea
Surface wind (10m) on Saturday (24/10/15) 12:00UTC



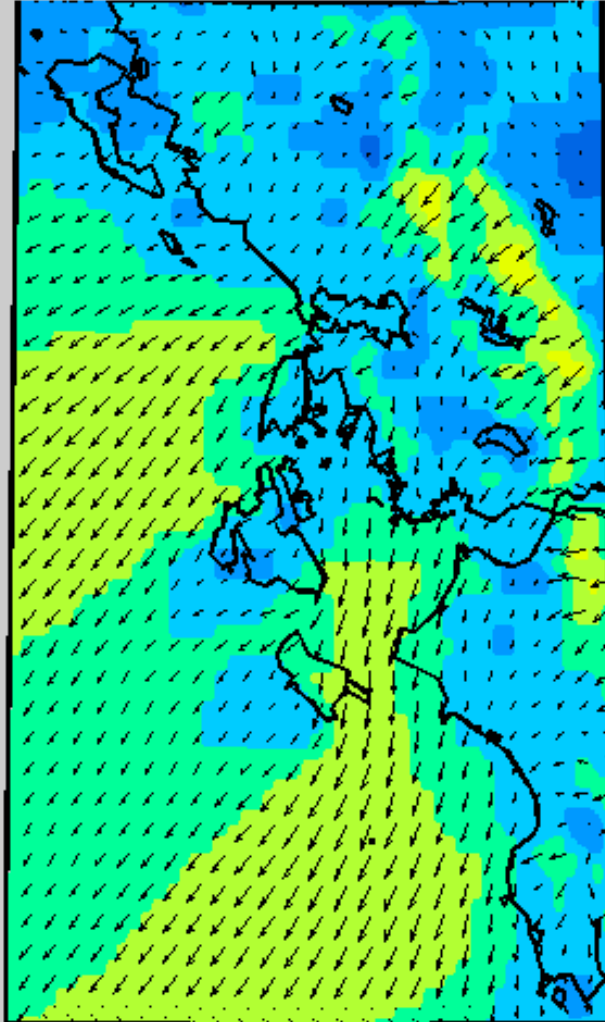
Color denotes the wind speed (b), vectors denote direction







Ionian sea
Surface wind (10m) on Sunday (25/10/15) 06:00UTC



Color denotes the wind speed (b), vectors denote direction

